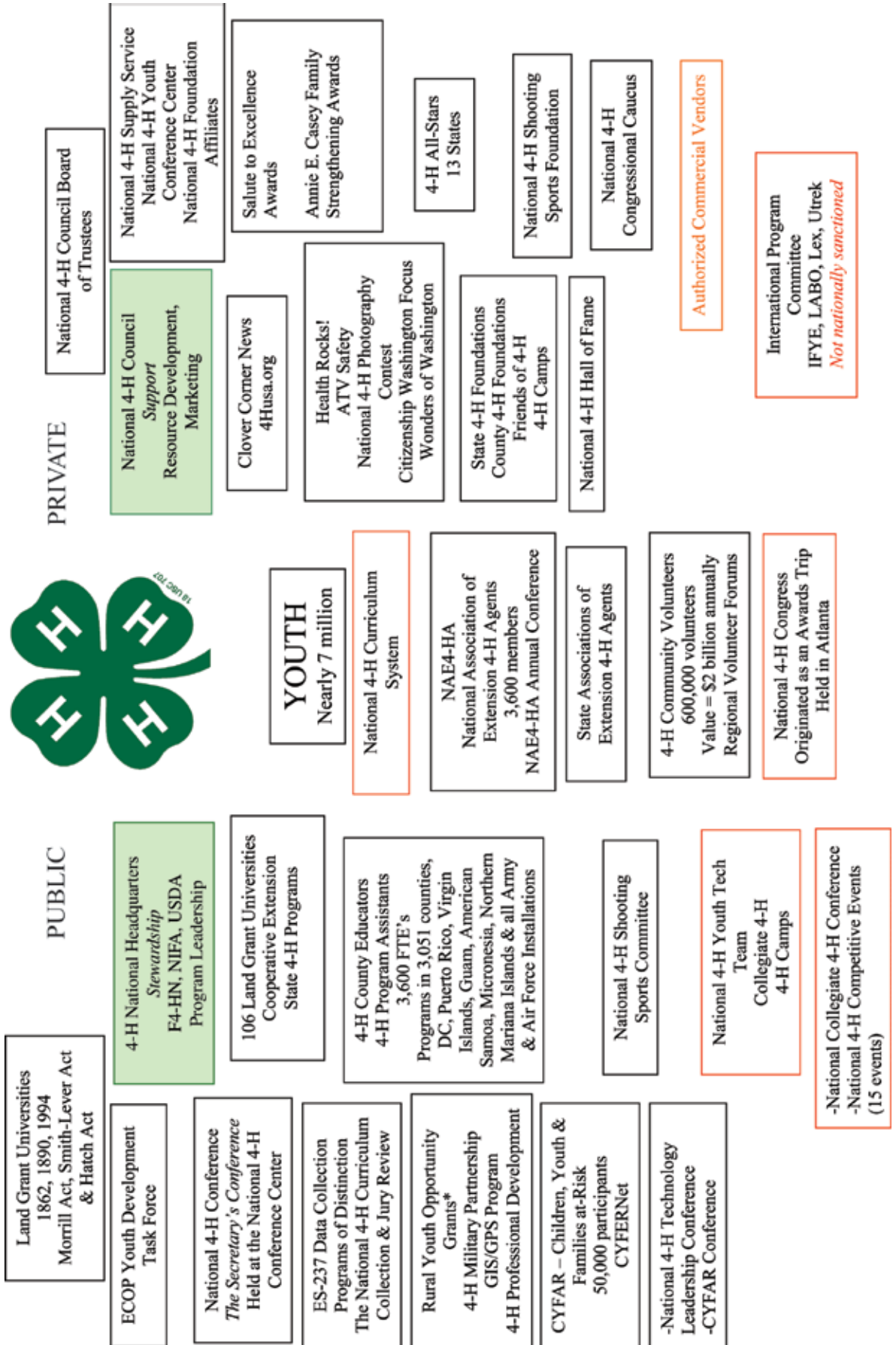


# LESSON 3

## 4-H STRUCTURE CHART HANDOUT

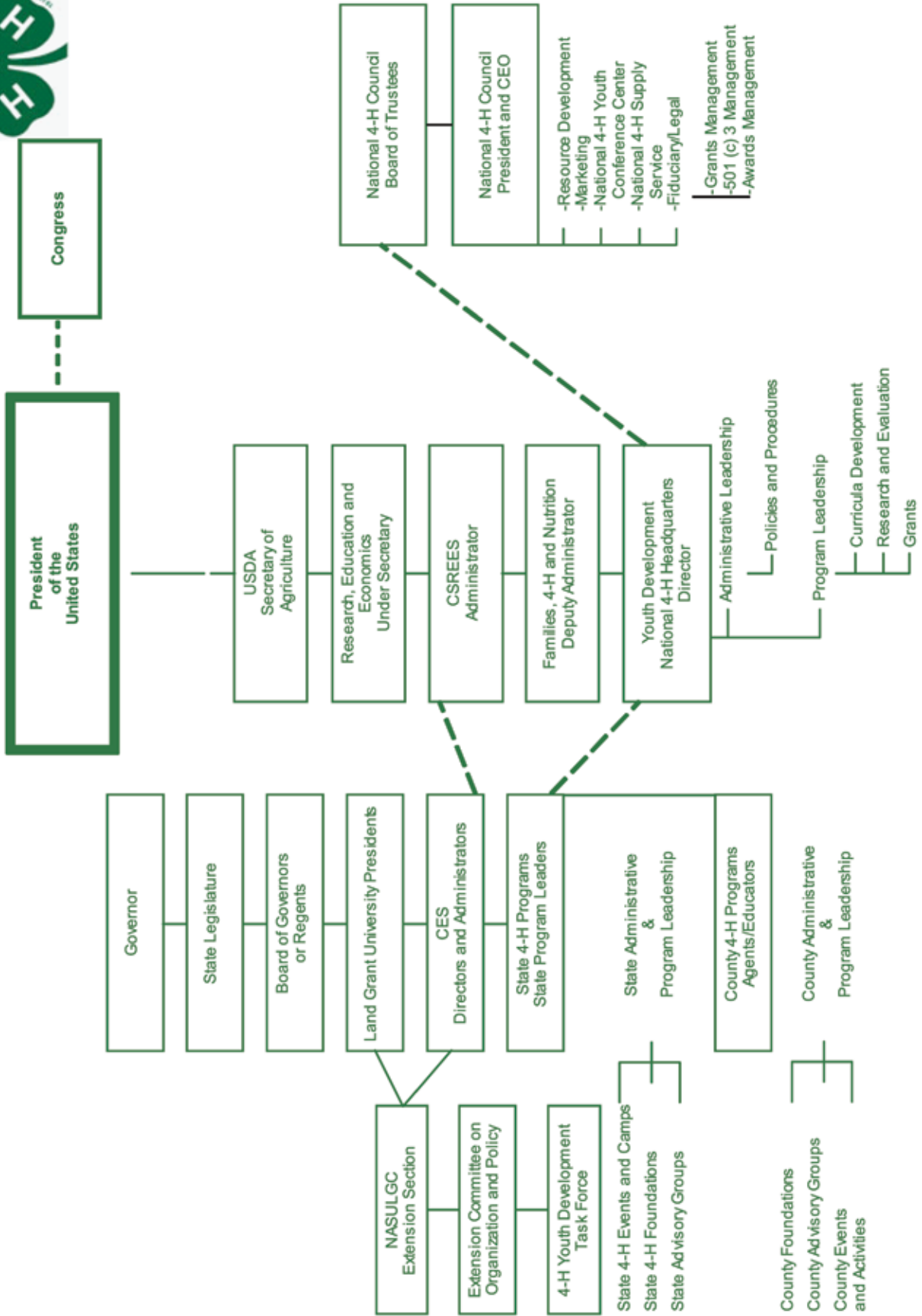


# LESSON 3

## 4-H ORGANIZATIONAL CHART HANDOUT



### 4-H Organizational Chart



# LESSON 3

## NATIONAL 4-H COUNCIL HANDOUT



### **About National 4-H Council**

National 4-H Council is the national, private sector non-profit partner of 4-H and the Cooperative Extension System. National 4-H Council focuses on fund-raising; brand management; communications; legal and fiduciary support to national and state 4-H programs; and operation of the full-service National 4-H Youth Conference Center in Chevy Chase, Md., and the National 4-H Supply Service, the authorized agent for items bearing the 4-H Name and Emblem.

Council is governed by its own Board of Trustees, made up of youth, representatives from 4-H, Extension, and land-grant universities, corporate executives and other private citizens from a wide array of backgrounds.

To learn more about National 4-H Council visit <http://www.fourhcouncil.edu>

### **Address**

National 4-H Council  
7100 Connecticut Avenue  
Chevy Chase, MD 20815  
Phone: 301-961-2800  
Email: [info@fourhcouncil.edu](mailto:info@fourhcouncil.edu)



United States Department of Agriculture  
National Institute of Food and Agriculture

# Land-Grant Colleges and Universities

