

### Wobble Limiter Installation for Champion Easy Bird Trap Machine

1



Power wobble attachment unit on and allow the wobble gear to rotate forward so the bolt assembly attaching the arm is in the forward most position. Make sure the main unit is powered off and the throwing arm is not cocked. Disconnect all components from the power supply before continuing.

### Wobble Limiter Installation for Champion Easy Bird Trap Machine

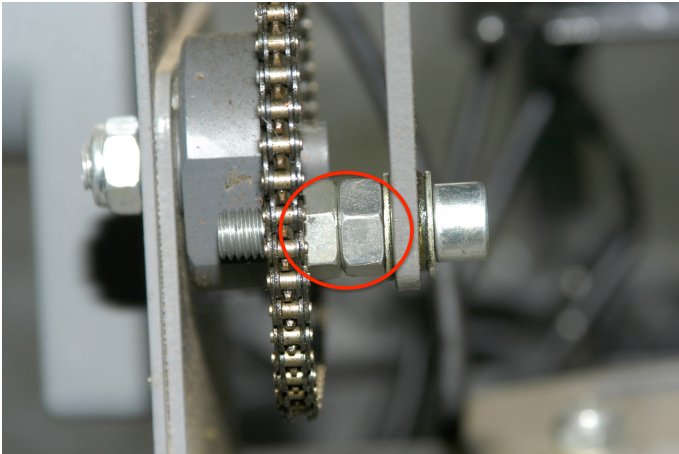
2



Using a 17mm open end wrench, remove the nylon lock nut located to the left of gear drive.

### Wobble Limiter Installation for Champion Easy Bird Trap Machine

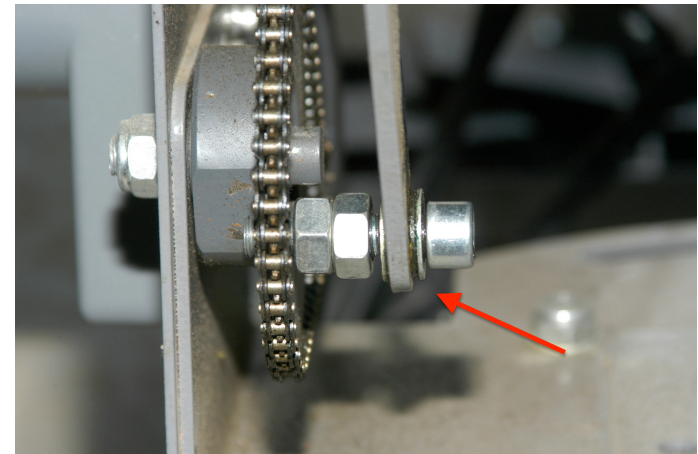
3



Using two open end wrenchs, loosen bolt from the gear slightly and separate the two nuts that are jammed together so they turn freely. Holding the nuts, back bolt out of gear.

### Wobble Limiter Installation for Champion Easy Bird Trap Machine

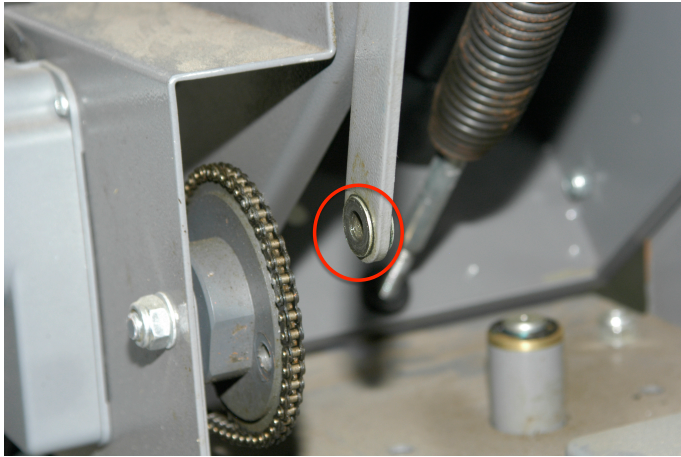
4



When removing the bolt, the two nuts that served as spacers should stay close to the gear to keep the pivot arm from binding. If the nuts move with the bolt, the pivot arm will bind and the bolt can not be completely removed or the threads in the gear could be damaged.

#### Wobble Limiter Installation for Champion Easy Bird Trap Machine

5



Once the bolt has been removed, make sure the brass bushing is still in place on the pivot arm.

#### Wobble Limiter Installation for Champion Easy Bird Trap Machine

6



Insert the limiter through the pivot arm on the left. There is no need to use a washer since the shoulder of the post and the bushing in the pivot arm serve this purpose.

#### Wobble Limiter Installation for Champion Easy Bird Trap Machine

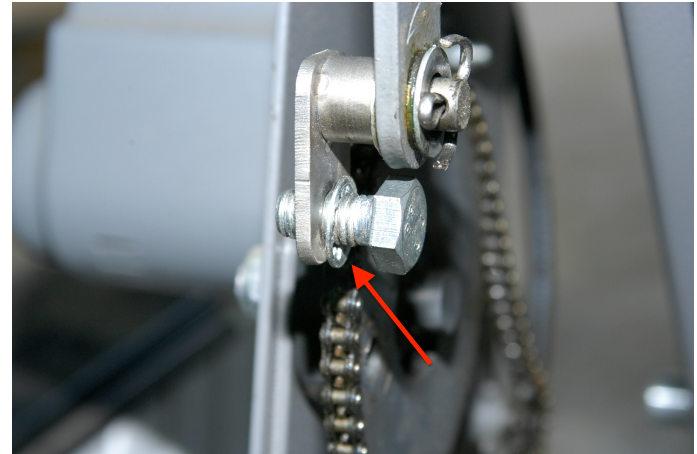
7



Install a washer and cotter pin through the hole in the post. Bend cotter pins around completely so they do not snag or catch against anything.

#### Wobble Limiter Installation for Champion Easy Bird Trap Machine

8

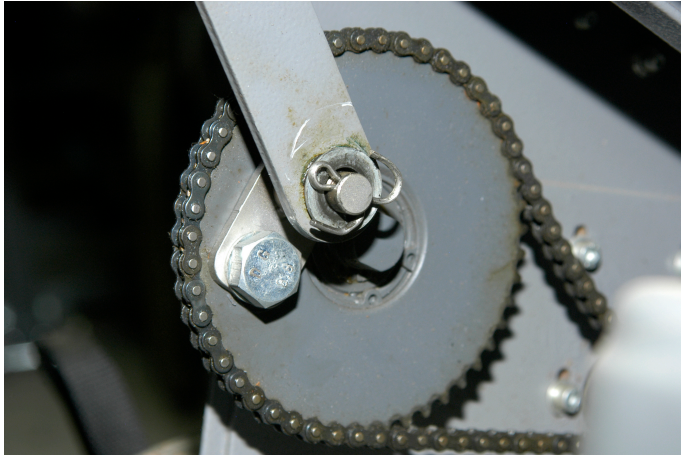


Insert a 1 1/4 10 mm bolt with a star type lock washer through the hole on the wobble limiter. The washer provides a "grip" surface to prevent the part from slipping when installed. Arrow shows the location of the lock washer.



### Wobble Limiter Installation for Champion Easy Bird Trap Machine

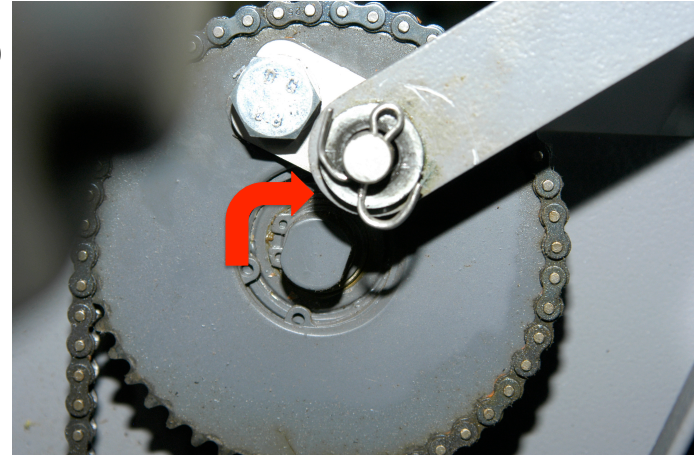
9



Holding the trap machine up, position the pivot arm toward the top of the gear and hand tighten the bolt through the threaded hole in the gear. The wobble limiter may rest against the center shaft of the gear to make it easier to tighten the bolt.

### Wobble Limiter Installation for Champion Easy Bird Trap Machine

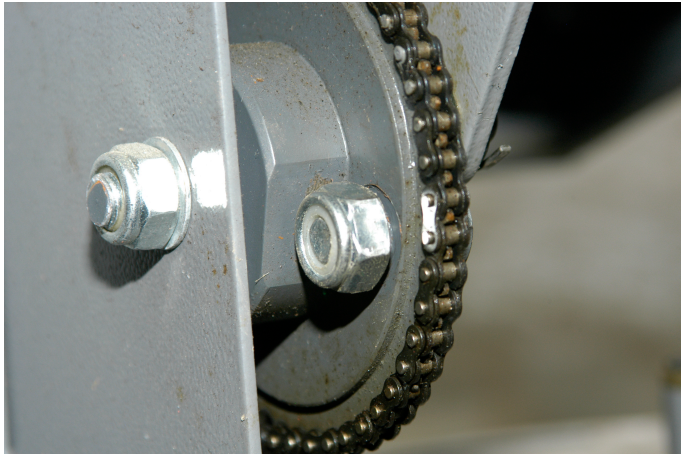
10



Place a flat washer between the wobble limiter and the center post to serve as a spacer. This will create about 1/8" of clearance to prevent the limiter from rubbing or binding when being used. The arrow in the picture indicates where the washer should be placed. Using a wrench, tighten the bolt firmly to the gear. Do not over tighten to prevent damage to the gear.

### Wobble Limiter Installation for Champion Easy Bird Trap Machine

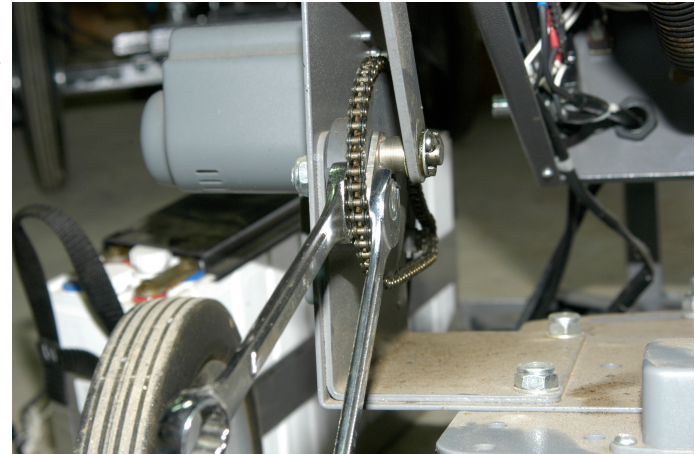
11



Install the nylon lock nut on the bolt to the left side of the gear. Lighten tighten with a wrench until the nut just touches the gear.

### Wobble Limiter Installation for Champion Easy Bird Trap Machine

12



Place a wrench on the bolt head attaching the wobble limiter to the gear and using a second wrench, snug the nylon lock to prevent the limiter from slipping. The wrench on the the bolt head should be used to prevent the limiter from shifting when tightening the nuts. Once tighten, you can use a pair of pliers to remove the washer that was serving as a spacer between the limiter and the gear shaft.