



A



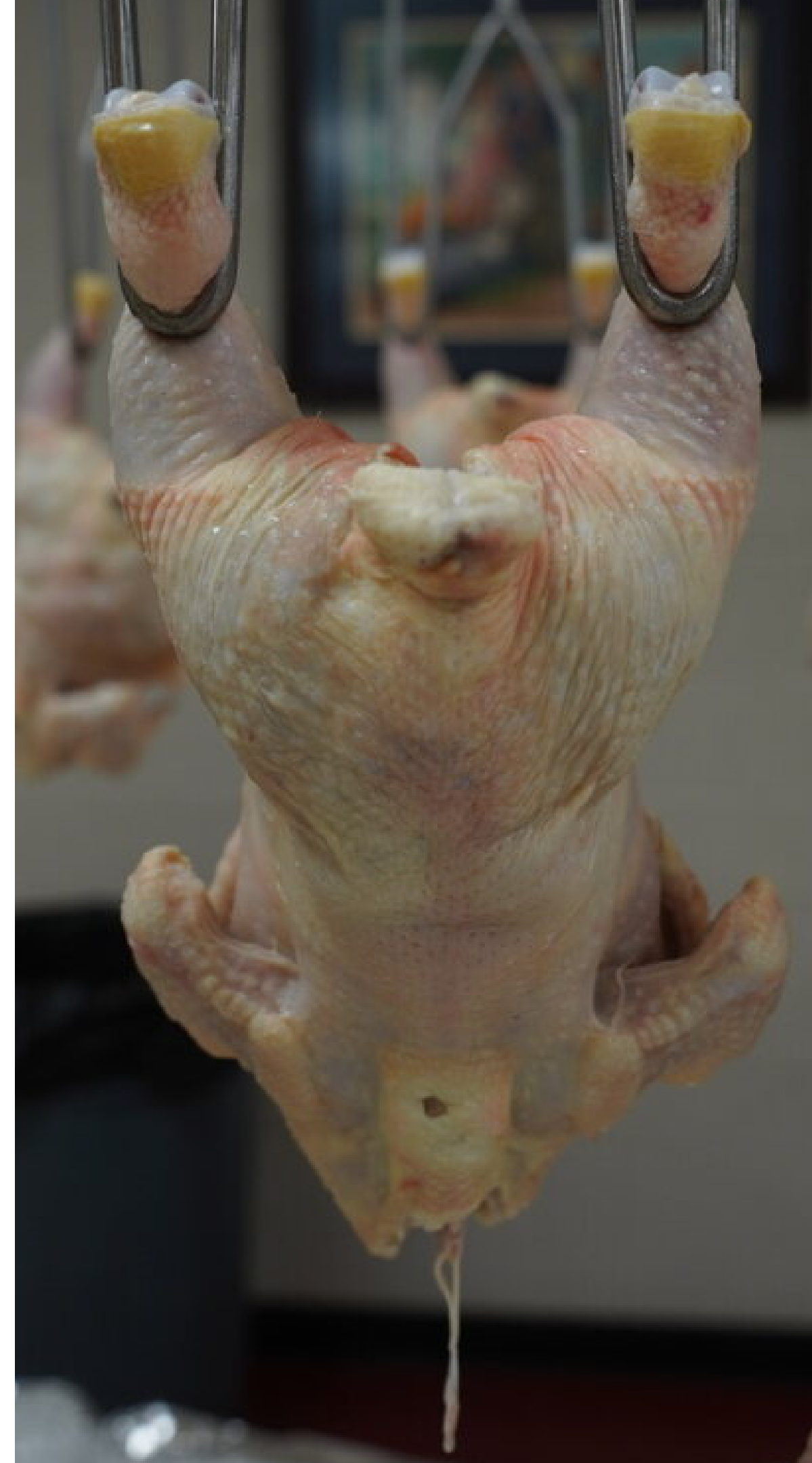


B
Exposed flesh greater
than 1/4" on thigh





A





B
Dislocated
wing





A





A





B
Exposed flesh greater than
1/4" on breast, greater than
1.5" on back





No Grade

Drumstick
removed





A





B
Missing wing flat,
exposed flesh on
left thigh





B
Exposed flesh greater than
1/4" on thigh





C
Tail trim greater
than 1/2 way to the
hip joint





B
Exposed flesh greater
than 1/4" on the thigh





B
Missing wing flat





B
Exposed flesh
greater than 1/4"
in
the breast





A





B
Tail cut not flush with
thighs, cuts on wings





A
Miscut hock that
should be trimmed
off but does not
affect grade





B
2 disjointed
wings, 1 broken
non-protruding
bone on left wing
flat, exposed flesh
greater than 1/4"
on thigh





A
1 disjointed wing

